



Gastro-Haal

COOKING EQUIPMENT

Product catalogue

GASTRO - HAAL, s.r.o.

Povazska 16, 940 67 Nove Zamky, Slovakia

gastro@gastrohaal.sk

www.gastrohaal.sk

Sales Manager Deutschland + Österreich

Stefan Plappert

Gastro-haal@email.de

+491 733 678 648

Electric boiling pans



CODE	POWER	VOLUME	CONTROL PANEL	DIMENSIONS	SHAPE	POWE INPUT	FEATURES
KE-785-O	ELECTRIC	85 l	classic analog	700x700x900mm	round	12 kW	STANDARD: automatic water filling, 2" outlet valve, sieve, Cold water connection, Double insulation on cables and wires (silicone protection), Covering of bottom.
KE-785-O-R	ELECTRIC	85 l	digital	700x700x900mm	round	12 kW	
KE-85-O	ELECTRIC	85 l	classic analog	700x900x900mm	round	12 kW	
KE-85-O-R	ELECTRIC	85 l	digital	700x900x900mm	round	12 kW	
KE-100-O	ELECTRIC	100 l	classic analog	900x900x900mm	round	12 kW	
KE-100-O-R	ELECTRIC	100 l	digital	900x900x900mm	round	12 kW	
KE-100	ELECTRIC	100 l	classic analog	900x900x900mm	square	12 kW	
KE-100-R	ELECTRIC	100 l	digital	900x900x900mm	square	12 kW	
KE-150-O	ELECTRIC	150 l	classic analog	900x900x900mm	round	18 kW	
KE-150-O-R	ELECTRIC	150 l	digital	900x900x900mm	round	18 kW	
KE-150	ELECTRIC	150 l	classic analog	900x900x900mm	square	18 kW	
KE-150-R	ELECTRIC	150 l	digital	900x900x900mm	square	18 kW	
KE-200	ELECTRIC	200 l	classic analog	1400x900x900mm	square	24 kW	
KE-200-R	ELECTRIC	200 l	digital	1400x900x900mm	square	24 kW	
KE-300	ELECTRIC	300 l	classic analog	1400x900x900mm	square	30 kW	
KE-300-R	ELECTRIC	300 l	digital	1400x900x900mm	square	30 kW	
KE-400	ELECTRIC	400 l	classic analog	1400x900x900mm	square	36 kW	
KE-400-R	ELECTRIC	400 l	digital	1400x900x900mm	square	36 kW	
KE-500	ELECTRIC	500 l	classic analog	1800x900x900mm	square	42 kW	
KE-500-R	ELECTRIC	500 l	digital	1800x900x900mm	square	42 kW	

EXTRAS:
 Temperature controller, hot water input, IP45 Tank AISI 316 Vaseline outlet valve



Electric boiling pans



Gas boiling pans

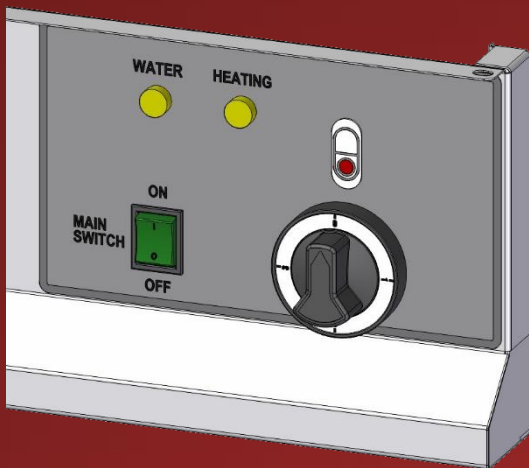


CODE	POWER	VOLUME	CONTROL PANEL	DIMENSIONS	SHAPE	POWER INPUT	FEATURES
KG-785-O	GAS	85 l	classic analogy	700x700x900mm	round	12 kW	STANDARD: automatic water filling, 2" outlet valve, sieve, Cold water connection, Double insulation on cables and wires (silicone protection), Covering of bottom. EXTRAS: Temperature Controller „T“, hot water input, IP45 TANK AISI 316 Vaseline outlet valve
KG-785-O-R	GAS	85 l	digital	700x700x900mm	round	12 kW	
KG-85-O	GAS	85 l	classic analogy	700x900x900mm	round	12 kW	
KG-85-O-R	GAS	85 l	digital	700x900x900mm	round	12 kW	
KG-100-O	GAS	100 l	classic analogy	900x900x900mm	round	12 kW	
KG-100-O-R	GAS	100 l	digital	900x900x900mm	round	12 kW	
KG-100	GAS	100 l	classic analogy	900x900x900mm	square	12 kW	
KG-100-R	GAS	100 l	digital	900x900x900mm	square	12 kW	
KG-150-O	GAS	150 l	classic analogy	900x900x900mm	round	18 kW	
KG-150-O-R	GAS	150 l	digital	900x900x900mm	round	18 kW	
KG-150	GAS	150 l	classic analogy	900x900x900mm	square	18 kW	
KG-150-R	GAS	150 l	digital	900x900x900mm	square	18 kW	
KG-200	GAS	200 l	classic analogy	1400x900x900mm	square	24 kW	
KG-200-R	GAS	200 l	digital	1400x900x900mm	square	24 kW	
KG-300	GAS	300 l	classic analogy	1400x900x900mm	square	30 kW	
KG-300-R	GAS	300 l	digital	1400x900x900mm	square	30 kW	

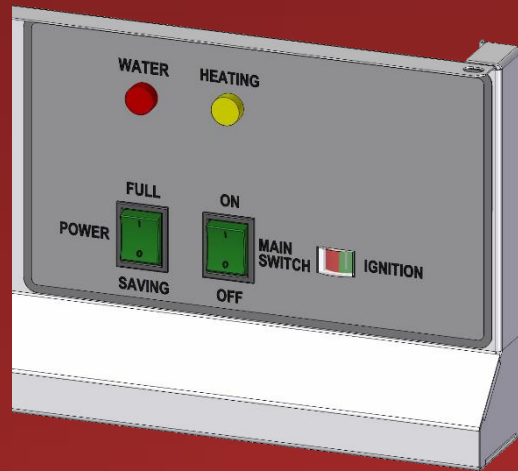
Gas boiling pans



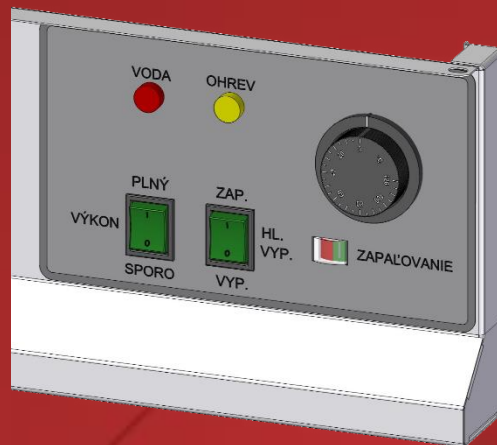
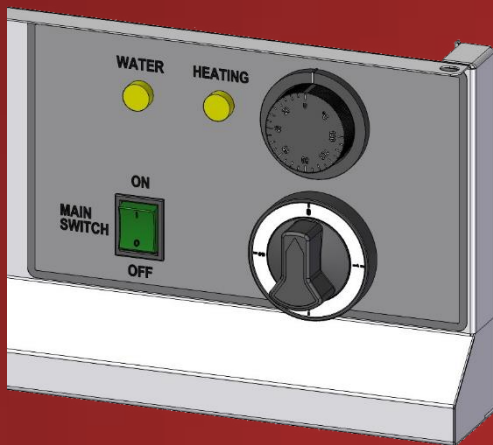
Classic analogy control panel
ELECTRIC



GAS



Classic analogy control panel + temperature controller
ELECTRIC



Digital control panel



Digital control panel + temperature controller



Details

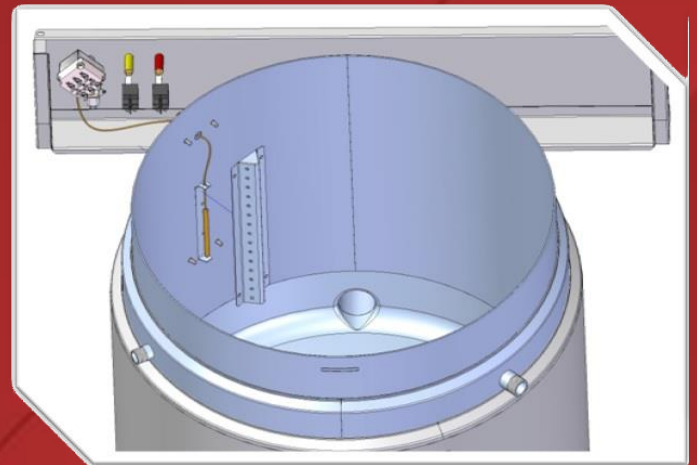
Digital control panel "R"

- ✓ controls the entire operation of equipment
- ✓ notification for regular maintenance
- ✓ internal diagnostics, fault detection
- ✓ simple technical service
- ✓ easier cooking, simple cleaning
- ✓ modern design
- ✓ available for electric and gas boiling pans
- ✓ combined with temperature controller



Temperature controller "T"

- ✓ setting the cooking temperature
- ✓ from 30-100°C fitted with a hysteresis of +/-2°C
- ✓ perfect for cooking, sterilization, canning
- ✓ available in electric or gas supply
- ✓ option for digital / standard control panel

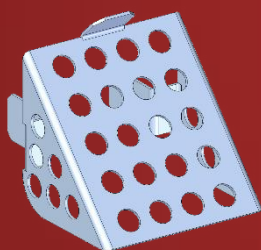


* **EXTRA FEATURE**, NEEDED TO ORDER IT EXTRA

BY ADDING AN ADDITIONAL CODE "T" TO THE PRODUCT CODE (KE-300-R-T, KE-300-T)

Accessories

Sieve



Steamer

(round / square)



Steam boiling pans



CODE	POWER	VOLUME	CONTROL	DIMENSIONS	SHAPE	MAX. STEAM CONSUMPTION	FEATURES
KP-785-O	STEAM	85 l	rotary knob	700x700x900mm	round	40 kg/hour	STANDARD: 2" outlet valve, sieve, Cold water connection, Covering of bottom. EXTRAS: Steam separator (cup), Tank AISI 316 Vaseline outlet valve
KP-85-O	STEAM	85 l	rotary knob	700x900x900mm	round	40 kg/hour	
KP-100-O	STEAM	100 l	rotary knob	900x900x900mm	round	50 kg/hour	
KP-100	STEAM	100 l	rotary knob	900x900x900mm	square	50 kg/hour	
KP-150-O	STEAM	150 l	rotary knob	900x900x900mm	round	60 kg/hour	
KP-150	STEAM	150 l	rotary knob	900x900x900mm	square	60 kg/hour	
KP-200	STEAM	200 l	rotary knob	1400x900x900mm	square	70 kg/hour	
KP-300	STEAM	300 l	rotary knob	1400x900x900mm	square	90 kg/hour	
KP-400	STEAM	400 l	rotary knob	1400x900x900mm	square	120 kg/hour	
KP-500	STEAM	500 l	rotary knob	1800x900x900mm	square	190 kg/hour	

Steam boiling pans



Tilting bratt pans – electric / gas



CODE	POWER	TANK BOTTOM MATERIAL	VOLUME	DIMENSIONS	POWER INPUT (GAS = FULL/SAVING)		FEATURES
PE-750	ELECTRIC	stainless steel	50 l	800x700x900mm	9 kW		STANDARD: Tap for cold water, automatic water filling, maual tilting
PE-750 C	ELECTRIC	cast-iron	50 l	800x700x900mm	9 kW		
PE-980	ELECTRIC	stainless steel	80 l	900x900x900mm	13,5 kW		
PE-980 C	ELECTRIC	cast-iron	80 l	900x900x900mm	13,5 kW		
PE-9120	ELECTRIC	stainless steel	120 l	1200x900x900mm	18 kW		
PE-9120 C	ELECTRIC	cast-iron	120 l	1200x900x900mm	18 kW		
PP-750	GAS	stainless steel	50 l	800x700x900mm	10,9 kW	7,3 kW	
PP-750 C	GAS	cast-iron	50 l	800x700x900mm	10,9 kW	7,3 kW	
PP-980	GAS	stainless steel	80 l	900x900x900mm	18 kW	7,5 kW	
PP-980 C	GAS	cast-iron	80 l	900x900x900mm	18 kW	7,5 kW	
PP-9120	GAS	stainless steel	120 l	1200x900x900mm	20,4 kW	9 kW	
PP-9120 C	GAS	cast-iron	120 l	1200x900x900mm	20,4 kW	9 kW	

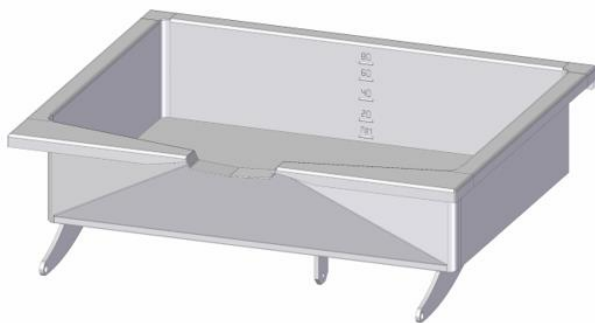
Electric bratt pans



Gas bratt pans



STAINLESS STEEL TANK



CAST-IRON TANK



Electric ovens



CODE	POWER VOLUME	MATERIAL	BAKING	INSERTS	DIMENSIONS	POWE INPUT	THERMOSTAT RANGE (°C)
PCE-910 SC	ELECTRIC single	stainless steel	static, hot air	3	900x868(925)x688mm	4,1 kW	50 - 300 °C
PCE-920 SC	ELECTRIC double	stainless steel	static, hot air	2x3	900x868(925)x1195mm	2x 4,1 kW	50 - 300 °C
PCE-930 SC	ELECTRIC triple	stainless steel	static, hot air	3x3	900x868(925)x1702mm	3x 4,1 kW	50 - 300 °C

FEATURES

STANDARD: Sound signaling, timer, upper and lower heating element, fan, adjustable feet

EXTRAS: enamel trays, stainless steel rack

Electric ranges and stoves



CODE	POWER / VOLUME	TYPE	OVEN	THERMOSTAT RANGE (°C)	HEATING	DIMENSIONS	POWE INPUT
SE-740 AC	ELECTRIC	range	hot air, 3 inserts	50 - 300 °C	4 round heating plates Ø 230mm	800x700x900mm	4 x 2,6kW
SE-940 ASC	ELECTRIC	range	static, hot air, 3 inserts	50 - 300 °C	4 square heating plates 415x294mm	900x900x900mm	4 x 3kW
VE-920 A	ELECTRIC	stove	-	-	2 square heating plates	450x900x900mm	2x3kW
VE-740 A	ELECTRIC	stove	-	-	4 round heating plates Ø 230mm	800x700x900mm	4x2,6kW
VE-940 A	ELECTRIC	stove	-	-	4 square heating plates 415x294mm	900x900x900mm	4x3kW

FEATURES

STANDARD : Oven: Sound signaling, timer, upper and lower heating element, fan, adjustable feet

EXTRAS : enamel trays, stainless steel rack

Combined ranges and gas stoves



CODE	POWER / VOLUME	TYPE	OVEN	THERMOSTAT RANGE (°C)	HEATING	DIMENSIONS	POWE INPUT
SPE-740 C	COMBINED	range	hot air, 3 inserts	50 - 300 °C	4 burners	800x700x900mm	2x3,7/2x4,8kW
SPE-940 SC	COMBINED	range	static, hot air, 3 inserts	50 - 300 °C	4 burners	900x900x900mm	1x3,7/2x4,8/ 1x7 kW
SPE-960 NSC	COMBINED	range	static, hot air, 3 inserts	50 - 300 °C	6 burners	1400x900x900mm	3x3,7/2x4,8/ 1x7kW
VP-740	GAS	stove	-	-	4 burners	800x700x900mm	2x3,7 / 2x4,8kW
VP-940	GAS	stove	-	-	4 burners	900x900x900mm	1x3,7 / 2x4,8 / 1x7kW
VP-960	GAS	stove	-	-	6 burners	1200x900x900mm	3x3,7 / 2x4,8 / 1x7kW

FEATURES

STANDARD : Oven: Sound signaling, timer, upper and lower heating element, fan, adjustable feet

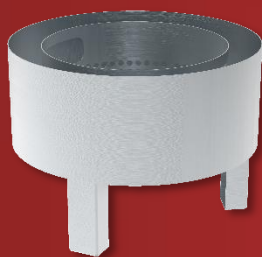
EXTRAS : enamel trays, stainless steel rack

Stock pot ranges – electric, gas



CODE	POWER	HEATING	DIMENSIONS	POWE INPUT
STE-6H	ELECTRIC	1 square heating plate	450x480x360mm	6kW
STP-10	GAS	1 burner	520x540x490mm	10 kW

Potato peelers



✓ Waste 10% = saving 1kg/cycle

3 rinsing nozzles

✓ Disc replacement at customer service
 ✓ Made in EU

✓ Water consumption 6l/cycle
 Waste outlet Ø 60,3mm

✓ Easy to clean ✓

✓ Faster and cheaper

✓ Water connection 1/2" ✓



CODE	POWER	CAPACITY KG	DIMENSIONS	PERFORMANCE	TIME OF 1 CYCLE	POWE INPUT
ŠKZ-15	ELECTRIC	min. 8 kg / optimum 12 kg / max. 15 kg	493x638x901mm	400-500 kg/hour	1,5 - 3,5 min	0,55kW
ŠKZ-25	ELECTRIC	min. 20 kg / optimum 25 kg / max. 30 kg	604x748x940mm	200-300 kg/hour	1,5 - 3,5 min	0,75kW
LO-1	Accessory	Waste catcher	317x130x230mm	-	-	-



Automatic disinfection dispenser



- ✓ Automatic
- ✓ Easy use
- ✓ No liquid waste around the dispenser
- ✓ Clean area around the dispenser
- ✓ Money saving
- ✓ 10 dosing level
- ✓ Quick dosing
- ✓ Long product lifetime
- ✓ No maintenance
- ✓ Durable
- ✓ Unique electronics
- ✓ High quality stainless steel

CODE	POWER	DESCRIPTION	INSTALLATION	VOLUME	DIMENSIONS
DEZINFLEX XL	ELECTRIC 230V	Automatic hand disinfection tower	tower	5l, 10l	350x310x1212 mm
DEZINFLEX L	6x batteries	Automatic hand disinfection dispenser	tower	5l, 10l	350x310x1212 mm
DEZINFLEX M	ELECTRIC 230V	Automatic hand disinfection dispenser	on wall mounting	1l	225x142x330 mm
			with table stand		225x250x429 mm
			with floor stand		225(350)x220(350)x1400 mm
DEZINFLEX S	6x batteries	Automatic hand disinfection dispenser	on wall mounting	1l	225x142x330 mm
			with table stand		225x250x429 mm
			with floor stand		225(350)x220(350)x1400 mm
DEZINFLEX M/E	ELECTRIC	Automatic hand disinfection dispenser with camera thermal	with Hikvision camera	1l	345x345x1651 mm

